

Supa Flush Lite Outlet Valve

CONVERSION GUIDE



 TWIST >  CLICK >  SAVE

STEP 1



Remember to close the isolating valve to shut off the water supply to your toilet

Move back & unclip

EASY TO INSTALL | EASY TO USE | EASY TO SAVE

SAVE WATER ...

When : Immediately
Installation time: 5 minutes

The Supa Flush Lite has no internal float to regulate the speed at which the valve shuts off. This patented Outlet valve will only flush water as long as the handle is pushed down, allowing for multiple flushes from each tank of water.

HOW YOU SAVE

An average monthly water saving of 5000lt per residential installation



STEP 2



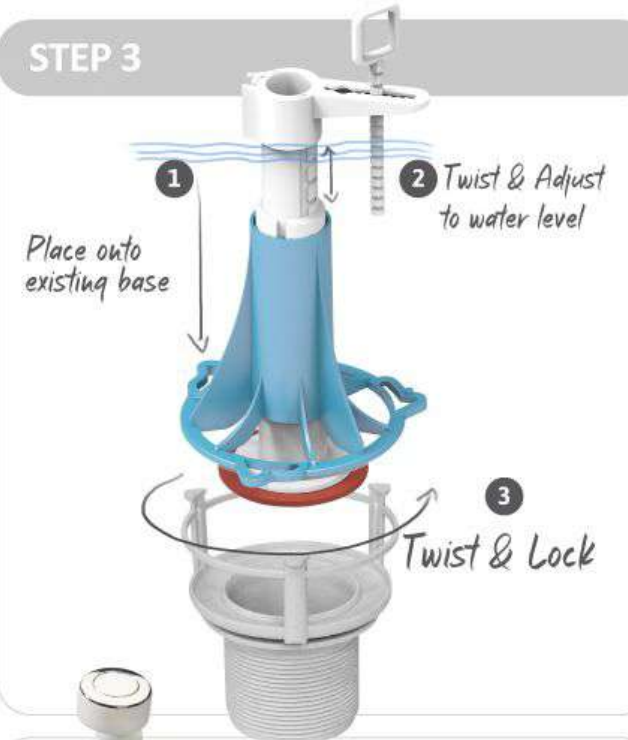
Turn & lift

Turn & lift



Fits on most existing bases

STEP 3



Place onto existing base

Twist & Adjust to water level

Twist & Lock

FP395
For top flush
Installation

FP91G
For Front flush
Installation

Once the assembly is done, simply slide the adjustment rod over the swivel arm or dual flush assembly.

STEP 4

STEP 5 Open your isolating valve, check for leaks & start saving water with every flush